



TEREZAESTATES.COM

BUY | SELL | RENT



One Bedroom Apartments in Soulever by Beyond

Dubai, United Arab Emirates, Maritime City, Soulever by Beyond

Starting Price AED 3,091,000

Ref: S-1284



FIELD TYPE

For Sale



STATUS

Featured



BEDROOMS

1



BATHROOMS

2



BUILT-UP AREA

848 sq ft



TERRACE

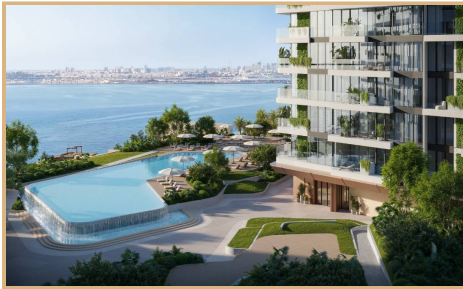
150 sq ft



TEREZAESTATES.COM

BUY | SELL | RENT

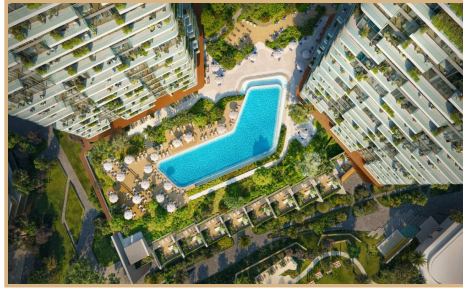
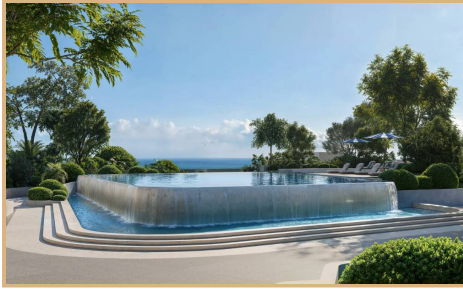
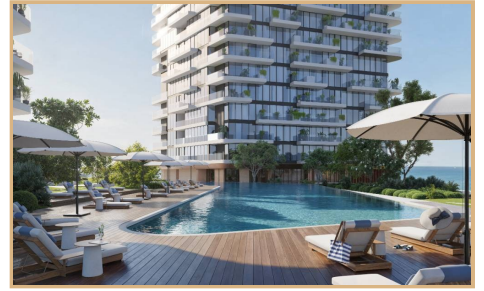
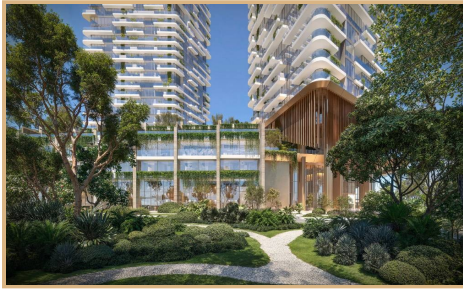
Gallery





TEREZAESTATES.COM

BUY | SELL | RENT





TEREZAESTATES.COM

BUY | SELL | RENT

Property Description

Location: Dubai, United Arab Emirates, Maritime City, Soulever by Beyond

Tereza Estates proudly presents Soulever by Beyond, a striking new waterfront address in Dubai Maritime City, where contemporary design, panoramic sea views, and elevated urban living converge in one of Dubai's most strategically positioned coastal districts. Rising along the shoreline between Port Rashid and historic Dubai, Soulever by Beyond captures uninterrupted views of the Arabian Gulf and the city skyline. The development reflects Beyond's signature architectural language — clean lines, refined materials, and thoughtfully curated interiors designed to maximize light, space, and flow. The project offers a collection of modern luxury residences with spacious layouts and expansive terraces, creating seamless transitions between indoor elegance and open-air waterfront living. Interiors are designed with premium finishes, contemporary kitchens, and high-quality detailing that embody understated sophistication.

Residents benefit from a carefully curated selection of lifestyle amenities, including a resort-style swimming pool, fully equipped fitness center, landscaped leisure areas, and dedicated social spaces designed for relaxation and connection. The waterfront promenade and marina surroundings enhance the daily living experience, offering a dynamic yet tranquil environment. Located minutes from Sheikh Zayed Road, Soulever by Beyond ensures effortless access to Downtown Dubai, DIFC, Jumeirah, and Dubai International Airport, making it ideal for both end-users and investors seeking strong rental demand and long-term capital appreciation within a central waterfront setting. Soulever by Beyond represents a compelling opportunity to own a contemporary luxury residence in Dubai Maritime City — a district rapidly evolving into one of Dubai's most desirable waterfront communities.

If you would like to know more about Soulever by Beyond at Dubai Maritime City, please contact us at [+971585365111](tel:+971585365111) or fill an inquiry form with your details to request a call back and we will be looking forward to arrange a private presentation for you along with answering any questions you may have about your future luxury waterfront home.

Trakheesi Permit #0762384517; Estimated Completion Date: Q1 2029

Payment Plan: 50% during construction / 50% on completion



TEREZAESTATES.COM

BUY | SELL | RENT

Key Features

- ✓ For Sale
- ✓ New Development
- ✓ Breathtaking Sea Views
- ✓ Outdoor Activities
- ✓ Fully Fitted Apartments
- ✓ Maid's Room
- ✓ Floor Area : 848 sq ft
- ✓ Waterfront Community
- ✓ Forest Views
- ✓ 1-4 Bedroom Apartments
- ✓ High-End Finishes
- ✓ Wellness Focused Community
- ✓ Beach Access
- ✓ Greenery & Forest
- ✓ Infinity Pools
- ✓ Floor To Ceiling Windows

Amenities

- ✓ Wellness Focused Community
- ✓ The Clubhouse
- ✓ Spa & Treatment Rooms
- ✓ Games Room
- ✓ Children's Play Area
- ✓ Landscaped Gardens
- ✓ Concierge
- ✓ Yoga Room
- ✓ Cinema Room
- ✓ Pets Allowed
- ✓ Infinity Pool
- ✓ State Of The Art Gym
- ✓ Welcome Lobby Lounge
- ✓ Library



TEREZAESTATES.COM

BUY | SELL | RENT

Mobile: +971 585 365 111

Email: hello@terezaestates.com

TEREZA REAL ESTATE LLC

ORN: 32523, BRN: 35616

Dubai, United Arab Emirates

<https://www.staging.terezaestates.com>